



# R O S E N T H A L

The dreaded threat of breast cancer does not discriminate. It is ubiquitous among half of our society.

My wife, Catherine's, personal experience has enlightened us to a place of hope, loving kindness and selfless giving--  
-The Norma F. Pfriem Breast Care Center in Fairfield.

The Norma F. Pfriem Breast Care Center is a place that enables women in need to dream of a future.

The art exhibit is not so much about my work, but about the limitless possibilities that await us to create, to soar and to dream.

Please join us for a celebration of life, for the creativity that lightens our hearts, and for The Chance to Dream by contributing to:

The Norma F. Pfriem Breast Care Center in Fairfield, CT  
c/o Rosenthal Cosmetic Surgery & Skin Care Center  
75 Kings Highway Cutoff  
Fairfield, CT 06824  
(203) 335-3223

Catherine and I thank you for your generosity.

*Jeffrey S. Rosenthal, M.D.*

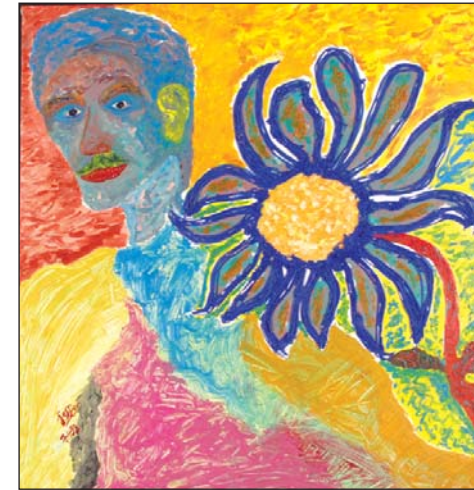
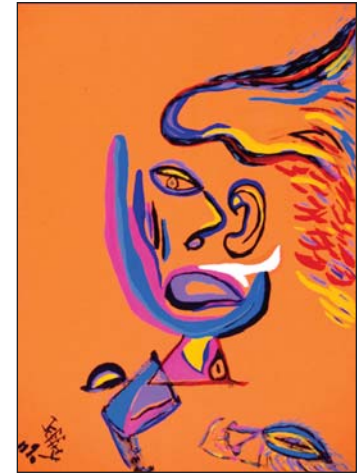
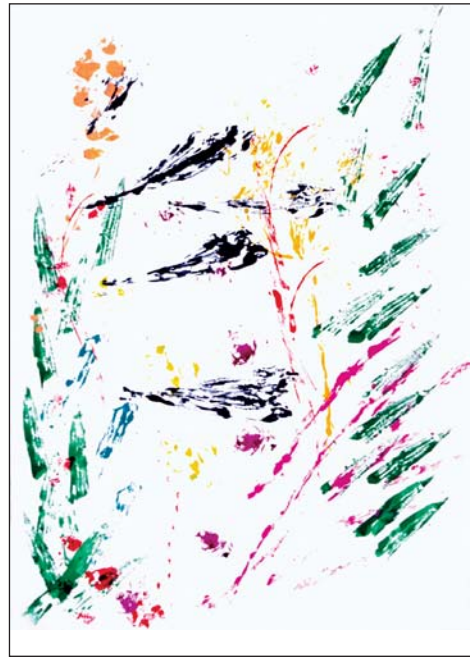


# Art

2002

Fairfield University  
Walsh Art Gallery

**Jeffrey S. Rosenthal, M.D., is a plastic surgeon practicing in Fairfield for 18 years. He believes in the joy of creating.**



A glimmer of light enters my mind, and I revel in the thought of what I'll do with this small ray of light. If it can be imagined, then I know it can be created.

An art exhibit is a celebration of life and all the many nuances that give our lives meaning. Sights, sounds, textures, images....they all are but a hair's breath from our finger tips.

This exhibit is an eclectic array of paintings, drawings, sculptures, photography and writings over some 30 years.

Being a self-taught artist, the normal constraints that may shackle and bind the imagination are not in place for me. Mixing a rainbow of colors to create a vibrant bouquet is allowable, and even desirable. Painting with leaves, flower petals, stems, rocks and string enable nature to play an integral role.

**How does plastic surgery link to art?**

The human form is the ultimate artistic medium. The plastic surgeon and the artist harness similar powers of thought, conceptualization and execution when sculpting a face on a beautiful living soul or creating a facsimile of life in clay, stone or wood.

Eyes must see tiny variations, and hands are taught to execute the wish-

es of one's mind. Artistic creativity is part of all that I touch. The sheer exhilaration of the end result brings a delight that makes the dedication worthwhile.

I am hopeful that you will be moved by some piece of art in this exhibit.

*Jeffrey S. Rosenthal, M.D.*